

ALABAMA STATE UNIVERSITY

Assurance # A3069-01

**ASSURANCE OF COMPLIANCE WITH PUBLIC HEALTH SERVICE
POLICY ON HUMANE CARE AND USE OF LABORATORY ANIMALS**

I, Tamara Young Lee, Director for the Office of Research of Research and Sponsored Programs, as named Institutional Official (IO) for animal care and use program at Alabama State University, hereinafter referred to as Institution, by means of this document, provide assurance that this Institution will comply with the Public Health Service Policy on Humane Care and Use of Laboratory Animals, hereinafter referred to as PHS Policy.

I. APPLICABILITY OF ASSURANCE

This Assurance applies whenever this Institution conducts the following activities: all research, research training, experimentation, biological testing, and related activities involving live vertebrate animals supported by the PHS, HHS, and/or NSF. This Assurance covers only those facilities and components listed below.

A. The following are branches and components over which this Institution has legal authority, included are those that operated under a different name: Alabama State University: Biomedical Research and Training Programs, Department of Math and Sciences, Department of Psychology, Microbiology Program and the Department of Biological Sciences.

B. The following are other institution(s), or branches and components of another institution:
None.

II. INSTITUTIONAL COMMITMENT

A. This Institution will comply with all applicable provisions of the Animal Welfare Act and other Federal statutes and regulations relating to animals.

B. This Institution is guided by the "*U.S. Government Principles for the Utilization and Care of Vertebrate Animals Used in Testing, Research, and Training*."

This Institution acknowledges and accepts responsibility for the care and use of animals involved in activities covered by this Assurance. As partial fulfillment of this responsibility, this Institution will make a reasonable effort to ensure that all individuals involved in the care and use of laboratory animals understand their individual and collective responsibilities for compliance with this Assurance as well as all other applicable laws and regulations pertaining to animal care and use.

D. This Institution has established and will maintain a program for activities involving animals in accordance with the Guide for the Care and Use of Laboratory Animals.

E. This Institution agrees to ensure that all performance sites engaged in activities involving live vertebrate animals under consortium (subaward) or

subcontract agreements have an Animal Welfare Assurance and that the activities have Institutional Animal Care and Use Committee (IACUC) approval.

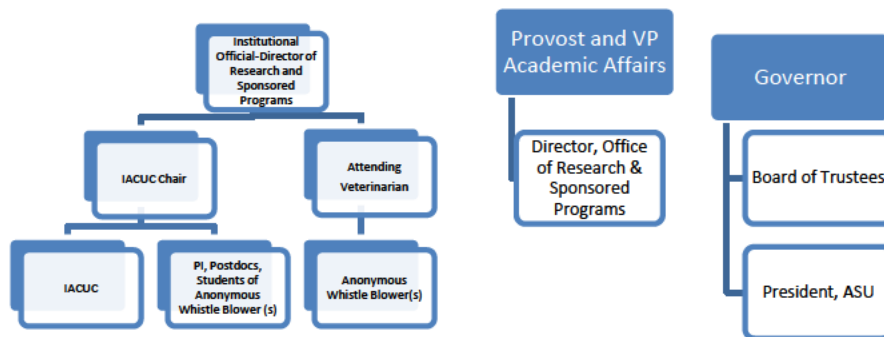
III. INSTITUTIONAL PROGRAM FOR ANIMAL CARE AND USE

A. The lines of authority and responsibility for administering the Program and ensuring compliance with this Policy are shown in the figure below. The primary oversight responsibilities for the Program rest with the IO, the Attending Veterinarian (AV), and the IACUC. Their roles fit in a defined organizational structure where the reporting relationships, authorities, and responsibilities of each are clearly defined and transparent. Together they establish policies and procedures, ensure regulatory compliance, monitor Program performance, and support high-quality science and humane use of animals in research. The lines of communication between the IACUC members and the designated IO as required by PHS Policy are open.

ALABAMA STATE UNIVERSITY INSTITUTIONAL PROGRAM FOR ANIMAL CARE & USE

Direct Lines of Authority for ASU
Animal Program Administration & Management

Alabama State University (ASU) Organizational Hierarchy



The direct lines of authority and responsibility for animal care and use at ASU are expanded and discussed below.

The IO

The IO bears ultimate responsibility for the Program. At ASU, the IO is the Director for Research and Sponsored Programs. Notwithstanding, the

overall Program direction is a shared responsibility among the IO, AV, and IACUC. The IO has the authority to allocate the resources needed to ensure the Program's overall effectiveness. Program needs are clearly and regularly communicated to the IO by the AV, the IACUC, and others associated with the Program (e.g., facilities management staff, occupational health and safety personnel, scientists). The IO, as a representative of senior administration, bears ultimate responsibility for the Program and is responsible for resource planning and ensuring alignment of Program goals with the Institution's mission

The IACUC

It is the Institution's responsibility to ensure that IACUC members are provided with training opportunities to understand their work and role. Such training should include formal orientation to introduce new members to the Institution's Program; relevant legislation, regulations, guidelines, and policies; animal facilities and laboratories where animal use occurs; and the processes of animal protocol and program review (Greene et al. 2007). Ongoing opportunities to enhance their understanding of animal care and use in science should also be provided. For example, IACUC members may meet with animal care personnel and research teams; be provided access to relevant journals, materials, and web-based training; and be given opportunities to attend meetings or workshops

Attending Veterinarian

The *attending veterinarian* (AV) is responsible for the health and wellbeing of all laboratory animals used at the Institution. The Institution must provide the AV with sufficient authority, including access to all animals, and resources to manage the program of veterinary care. The AV should oversee other aspects of animal care and use (e.g., husbandry, housing) to ensure that the Program complies with the *Guide*.

Personnel Management

Training and Education. All personnel involved with the care and use of animals must be adequately educated, trained, and/or qualified in basic principles of laboratory animal science to help ensure high-quality science and animal well-being. Due to the small size of ASU's animal care facility, the training of personnel, students, and staff rests with the Principal Investigator. Notwithstanding, ASU has an institutional subscription to the Collaborative Institutional Training Initiative (CITI) Program. The subscription provides, unlimited access for all participants (faculty, students, staff) at this Institution to all training modules and quizzes provided by CITI including: *Responsible Conduct of Research, Human Subjects Protections, Health Information Privacy and Security, and Humane Use of Animals in Research* courses and updates. The subscription provides these online training programs through the University of Miami Medical School.

The Chief Executive Officer, who serves as the President of Alabama State University, or his designee, has the responsibility, for appointing members of the

Institutional Animal Care and Use Committee. The Associate Provost for Research and Sponsored Programs serves as the Institutional Official who reports to the Provost, who, in turn, reports to the CEO. The President of ASU reports to the Board of Trustees who reports to the Governor of the state of Alabama.

The IACUC Chairperson and AV have the freedom to report independently or together to the IO. Independent reporting serves to minimize any conflict of interest which may exist between the two bodies. Principal investigators, students, staff, or anonymous whistle blowers have free and confidential access to the IACUC Chairperson, IO, and/or AV. Since the Chair and IO are present and available on a daily basis, this makes communication and reporting more efficient and expeditious. The AV and some IACUC members are not staff at ASU and thus are not available on a daily basis.

B. The qualifications, authority, and percent of time contributed by veterinarian(s) who will participate in the program are:



They will have the following responsibilities:

1. Review semi-annually Alabama State University's program for humane care and use of animals.
2. (b) (6) will serve as a member of the Institutional Animal Care and Use Committee.
3. As a member of IACUC, (b) (6) will make periodical (at least two times a year) visits to Alabama State University's animal facility to evaluate the physical facilities and procedures in animal care. Dr. Srivastava will visit 2-12 times per year based on need and as requested by the IO.
4. After each visit, each will, make recommendations (as appropriate) about the facility or procedures in animal care and use.
5. Provide necessary technical guidance and serve as a resource to IACUC and to Alabama State University's faculty and staff who use animals so that the Institution is in compliance with the PHS guide for Animal Care.

The Institutional Animal Care and Use Committee (IACUC) at this Institution is properly appointed in accordance with the PHS Policy IV.A.3.a and is qualified through the experience and expertise of its members to oversee the Institution's animal care and use program and facilities. The IACUC consists of at least five members, and its membership meets the composition requirements set forth in the PHS Policy, Section IV.A.3.b. The membership and roster are detailed in section VIII.

D. The IACUC will:

1. Review at least once every six months the Institution's program for humane care of animals, using the "Guide" as a basis for evaluation. The IACUC procedures for conducting semiannual program reviews are as follows: The program for human care and use of animals will be reviewed by IACUC members during the formal biannual meeting. However, review of the program can be conducted at any time by an individual member or members. Key aspects of the program reviewed are:
 - IACUC membership, functions and procedures, including protocol review.
 - Facility inspection process
 - Provisions for reviewing and investigating concerns regarding animal care and use

- Recordkeeping practices
 - Methods employed to meet reporting requirements
 - Occupational health and safety program
 - Veterinary medical care program
 - Personnel qualifications and training
2. Inspect at least once every six months all of the Institution's animal facilities (including satellite facilities) using the "Guide" as a basis for evaluation. The IACUC procedures for conducting semiannual facility inspections are as follows: Inspections will normally be performed during the formal biannual meeting. However, inspections of facilities can be carried out at any time by an individual member or members of the committee. Reports of inspection will be forwarded to the IACUC Chair. If deficiencies are found, the report will include the nature of the deficiency, a plan for correction, a date for correction, and instructions for a follow-up inspection. Copies of the inspection reports will be provided to Tamara Young Lee, Dean, College of Arts and Sciences, and the facility manager. Categories to be inspected include:
- Sanitation
 - Food and water provisions
 - Animal identification
 - Waste disposal
 - Animal health records
 - Controlled and/or expired drugs
 - Environmental control
 - Occupational health and safety concerns
 - Staff training
 - Knowledge of applicable rules and regulations
 - Security
3. Prepare reports of the IACUC evaluation as set forth in the PHS Policy at IV.B.3. and submit the reports to the Institutional Official. The IACUC procedures for developing reports and submitting them to the Institutional Official are as follows: Reports will be formulated by the IACUC Chairs from input of committee members at least once every six months. The reports will contain a description of the nature and extent of the Institution's adherence to the "Guide" and state the reasons, if any, for each departure. The semiannual report to the Institutional Official will note any deficiencies, distinguishing them as minor or significant along with a reasonable plan and schedule for correcting each deficiency. Also, any minority views will be included with the report and the report will be signed by a majority of the IACUC members.
4. Review concerns involving the care and use of animals at the Institution. The IACUC procedures for reviewing concerns are as follows: Information is provided to employees regarding the Institution's concern for the proper care and use of animals, and reporting mechanisms to the IACUC members, or Institutional staff regarding the care and use of animals. Signs are posted throughout the animal

facility and research laboratories with a telephone number for students to report concerns regarding animal care and use. The complainant is not required to be identified to the IACUC, IO, or AV. Anonymity will be respected. Required identification might potentially deter certain people from bringing forth complaints. When a complainant identifies themselves confidentiality will be strictly maintained. Once the chair of IACUC receives the complaint he will consider the allegations of noncompliance and determine if there is sufficient reason to investigate further. The following four circumstances will be used by IACUC to determine if it should be actively involved:

- a. When an allegation should be, but is not satisfactorily resolved at the local level.
- b. When any reasonable person would consider that gross mistreatment or noncompliance has occurred. This is based on the allegation itself, although it may be found to be untrue upon further investigation.
- c. When they are repeated minor instances of noncompliance or mistreatment from the same person or research group.
- d. When the IACUC cannot clearly decide if an allegation is worth investigating, it is probably better to investigate.

Assuming that the IACUC has determined that a complaint should be fully investigated, all involved persons will be informed about the nature of the complaint and the procedures to be followed.

5. Make written recommendations to the Institutional Official, regarding any aspect of the Institution's animal program, facilities, or personnel training. The procedures for making recommendations to the Institutional Official are as follows: The Chair, IACUC Committee, or individual members of the committee have direct access through the IACUC or through normal reporting channels to the IO (Tamara Young Lee), regarding any aspect of the Institution's animal program, facilities, or personnel training.
6. In accord with the PHS Policy IV. 1-3, the IACUC shall review and approve, require modifications in (to secure approval), or withhold approval of those activities related to the care and use of animals. The IACUC procedures for protocol review are as follows:

The IACUC has the responsibility for reviewing, approving, and requiring modifications in or withholding approval of those components of PHS-conducted or supported activities related to the care and use of animals. Proposals, involving animal use, are prepared by scientists within the Institution and reviewed by the IACUC. These proposals are first sent to the Chair of the IACUC, who distributes copies to each IACUC member for review and comments. The chair calls a meeting of IACUC at which time each protocol is reviewed by the full committee. The full committee review (FCR) is conducted at a convened meeting of a quorum of IACUC members and the outcomes are decided by a majority

vote of the convened quorum. Upon review, the committee votes to approve, disapprove, or require modifications (to secure approval). Finally, the IACUC Chair advises the principal investigator(s) regarding approvals/disapprovals for each protocol.

In the event of the FCR outcome of modifications required (to secure approval), the document is returned to the investigator for revision and then reviewed by FCR.

Also, all protocols are reviewed and approved by FCR.

Alabama State University Policy on Conflict of Interest states “No employee shall engage directly or indirectly in any business transactions or private arrangements for profit that accrue from or based upon his or her position or authority with the University. No employee shall participate in the negotiation of or decision to award contracts, the settlement of any claims or charges in any contracts, the making of loans, or the establishing of rates, guarantees or other things of value with or for any entity in which he or she has a financial or personal interest.” This would include that no member may participate in the IACUC review or approval of a research project in which the member has a conflicting interest (e.g., is personally involved in the project) except to provide information requested by the IACUC.

Alabama State University utilizes the role of an IACUC “Vice-Chair” who is subordinate to the Chair and able to assume the Chair’s duties when the Chair is not present or due to a conflict of interest.

7. Review and approve, require modifications in (to secure approval) or withhold approval of proposed significant changes regarding the use of animals in ongoing activities as set forth in the PHS Policy at IV. The IACUC procedures for reviewing proposed significant changes in ongoing research projects are as follows: The IACUC has responsibility for reviewing, approving, requiring modifications in, or withholding approval of proposed significant changes regarding the use of animals in ongoing activities. The IACUC require that investigators submit a protocol amendment form when a protocol alteration is needed. This includes modifications in experimental procedures, an increase in the number of animals required, and a change in personnel involved in the study. Any protocol modification requires IACUC approval prior to implementation and can be submitted at the time of continuation review. These proposals are first sent to the Chair of the IACUC, who distributes copies to each IACUC member for review and comments. The chair calls a meeting of IACUC at which time each protocol is reviewed by the full committee. Upon review, the committee votes to approve, disapprove, or require modifications (to secure approval) as described in Part III.D.6. Finally, the IACUC Chair advises the principal investigator(s) and Tamara Young Lee regarding approvals/disapprovals for each protocol.
8. Notify investigators and the Institution in writing of its decision to approve or withhold approval of those activities related to the care and use of animals, or of modifications required to secure IACUC approval as set forth in the PHS Policy at IV. 4. The IACUC procedures to notify investigators and the Institution of its decision regarding the protocol review are as follows: This notification will be provided from the IACUC Chair after review and input of individual IACUC

members.

If a protocol approval is withheld, the investigator has an opportunity to respond in person before the ASU-IACUC as required by PHS Policy IV.C.4.

The Institutional Official is notified of these decisions and the investigator is notified of IACUC approval or of the need for modifications to secure approval with a letter from the Chair of the ASU-IACUC.

9. Conduct continuing review of each previously approved, ongoing activity covered by PHS Policy at appropriate intervals as determined by the IACUC, including a complete review in accordance with the PHS Policy at IV. I-4 at least once every three years. The IACUC procedures for conducting continuing reviews are as follows: This will be accomplished by the investigator providing a copy of the progress report to the IACUC each year. Previously approved, ongoing activities will be included as an agenda item to a formal meeting of the IACUC at least once every three years and will be completely reviewed using the criteria mandated for initial review. Evidence of the review will be included in the minutes of the meeting, and the animal use proposal will receive the updated review date.

Post approval monitoring occurs through semi-annual laboratory inspections and observation of animals. The inspections are conducted by IACUC members.

10. Be authorized to suspend an activity involving animals as set forth in the PHS Policy at IV. 6. The IACUC procedures for suspending an ongoing activity are as follows: The IACUC may suspend an activity after review of the matter at a convened meeting of a quorum of the IACUC and with the suspension vote of a majority of the quorum present. If the IACUC suspends an activity involving animals, the Institutional Official in consultation with the IACUC shall review the reasons for suspension, take appropriate corrective action, and report that action with a full explanation to OLAW.

E. The occupational health and safety program for personnel who work in laboratory animal facilities or have frequent contact with animals is as follows:

The program will include education and training activities. The personnel will be instructed about hazards posed by the animals and materials used, zoonoses, chemical safety, microbiologic and physical hazards (e.g. allergens, animal bites, scratches, flammable materials), hazards associated with experimental procedures, handling of waste materials, and personal hygiene. They will also be instructed on personal protective equipment available such as masks, safety glasses, and gloves. ASU has a student health clinic facility on campus, where student, faculty and staff can receive immediate assistance in case of injury or health emergency. For other type of life threatening injury, they can be transported by ambulance to area hospitals which are located approximately <1-3 miles from campus. The personnel will also:

1. Show proof of annual physical examination by a licensed physician which verifies a minimal standing or good health (tetanus immunizations will be required).
2. Persons contracting diarrhea, common cold, flu and liver disorders will be released from duty until released by a physician and supervisor's evaluation.
3. All injuries (bites, scratches, cuts, etc.) will be reported to the Institutional biohazard officer immediately.

Alabama State University Policy regarding personal hygiene states:

"There are a number of personal hygiene issues which apply to all personnel who are exposed to animals.

*There should be no eating, drinking, smoking, or applying of cosmetics in areas where animals are housed or used.

*No animals should be kept overnight anywhere except in the animal room designated for the animal. There will be exceptions to this only where specific permission has been obtained for the retention of an animal by the attending veterinarian in an area approved for holding by the IACUC.

*All contaminated or infected substances should be handled in such a way as to minimize aerosols (for example, dust from bedding)."

- The institutional policies in place for personnel protection
Protective clothing is provided (e.g. jackets, aprons, lab coats, shoe covers, etc.).
Biosafety hoods are utilized in our animal care facility. The lab supervisor, facility supervisor, and/or the Principal Investigators (PI) are responsible for determining if any additional personal protection equipment needs to be added.

"The Public Health Service of the U.S. Department of Health and Human Services has directed research/training institutions to develop programs to promote the health and safety of employee who have substantial animal contact and are therefore, at risk. The program at Alabama State University has two components.

Education: *This document contains informational material about several specific conditions or practices with which animal personnel should be familiar. All personnel with animal contact are asked to read this material, complete the Documentation Form, by visiting the attending veterinarian, detaching it, and returning it to the Office of Research and Sponsored Programs. Personnel should keep the rest of the material for future reference.*

Health Care Program: *Before working with animals, personnel should visit a health services facility for an assessment of health and allergy history and, if necessary, immunization against tetanus.”*

- *The institutional policies in place for the handling of hazardous agents*
- *Hazardous wastes are contained in the study area in the appropriate containers for limited times. Biohazardous wastes are disposed of in labeled containers and moved to staging areas for disposal. Work with chemical hazards is conducted in chemical exhaust hoods that are vented according to federal regulations. Gases used in anesthesia are scavenged to limit exposure.*
- *How employees are trained on precautions to be taken during personnel pregnancy, illness, or decreased immunocompetence*
- *An online program and related assessment is required for training animal users on appropriate precautions to take during pregnancy and/or reduced immunocompetence.*

A general overall wellness exam is conducted by a physician to provide health clearance.

Personnel are enrolled in the program by a lab supervisor, facility supervisor, and/or Principal Investigator.

The occupational health and safety program is for personnel who work in the laboratory animal facilities or have frequented contact with animals.

The program includes education and training activities. The personnel are instructed about hazards posed by the animals and materials used, zoonoses, chemical safety, microbiologic and physical hazards (e.g. allergens, animal bites, scratches, flammable materials), hazards associated with experimental procedures, handling of waste materials, and personal hygiene. They are instructed on personal protective equipment available such as masks, safety glasses, and gloves. ASU has a student health clinic facility on campus, where student, faculty and staff can receive immediate assistance in case of injury or health emergency. For other type of life threatening injury, they can be transported by ambulance to area hospitals which are located approximately <1-3 miles from campus. Also, the personnel will:

1. Show proof of annual physical examination by a licensed physician which verifies a minimal standing or good health (tetanus immunizations is required).
2. Persons contracting diarrhea, common cold, flu and liver disorders will be released from duty until released by a physician and supervisor's evaluation.
3. All injuries (bites, scratches, cuts, etc.) will be reported to the Institutional Biohazard Officer immediately.

The Office of Research and Sponsored Programs' Institutional Officer (IO) along with the IACUC Committee will be responsible for monitoring the occupational health program.

Currently, no occupational health professional is involved in the development, planning and monitoring of the program.

The operational and day-to-day responsibility for safety in the workplace resides with the laboratory or facility supervisor (e.g., principal investigator, staff veterinarian, facility director) and depends on safe work practices by all employees. Ongoing monitoring inspections are conducted to identify and evaluate potential hazardous conditions or “near miss” incidents.

F. The total gross number of square feet in each animal facility (including each satellite facility), the species of animals housed therein and the average daily inventory of animals, by species, in each facility are provided in section X. *Facility and Species Inventory*.

G. The training or instruction available to scientists, animal technicians, and other personnel involved in animal care, treatment, or use is as follows: Alabama State University scientists, animal technicians and other personnel involved in animal care, treatment or use will be trained by either the principal investigator or consultant with the appropriate credentials, (b) (6), and/or the Attending Veterinarian to Alabama State University through lectures and hands-on training in the proper care and handling of laboratory animals. Emphasis will be placed on the following areas:

Emphasis will be placed on the following areas:

1. Humane methods of animal maintenance and experimentation, including:
 - a. The basic needs of each species of animal.
 - b. Proper handling and care of the various species of animals used by the facility.
 - c. Proper pre-procedural and post-procedural care of animals
 - d. Aseptic surgical methods and procedures
2. The concept, availability, and use of research or testing methods that limit the use of animals or minimize animal distress

The IACUC members are provided copies of the PHS Policy, the Guide for the Care and Use of Laboratory Animals, the Animal Welfare Act and Animal Welfare Regulations, the OLAW/ARENA IACUC Guidebook and a copy of the approved Animal Welfare Assurance. IACUC maintains records on attendance during training sessions. Also, trainees receive certificates following successful completion of training which are maintained by investigators and are available to IACUC for inspection.

3. Proper use of anesthetics, analgesics, and tranquilizers for any species of animals used by the facility.
4. Utilization of services (e.g. National Agricultural Library, National Library of Medicine) available to provide information on
 - a. appropriate methods of animal care and use
 - b. alternatives to the use of live animals in research
 - c. That could prevent unintended and

unnecessary duplication of research involving animals
d. Regarding the intent and requirements of the Animal Welfare act.

As guides we will use the *Manual for Assistant Laboratory Animal Technicians*, (AALAS 84-2), the *Manual for Laboratory Animal Technicians*, (AALAS 84-2), and the *Guide*. These training workshops (approximate duration two hours) will be provided by the CITI Program and/or will be organized twice a year at Alabama State University campus. The training records will be archived with the principal investigators and reviewed and provided to the IACUC Chair and IO upon request. These records will include formal and informal training sessions such as one-on-one instructions. Such records will have value in tracking the range of topics offered, the frequency of training sessions, and the participation of staff.

IV. INSTITUTIONAL PROGRAM EVALUATION AND ACCREDITATION

All of this Institution's programs and facilities (including satellite facilities) for activities involving animals have been evaluated by the IACUC within the past six months and will be reevaluated by the IACUC at least once every six months thereafter, in accord with the PHS Policy IV.B.1-2. Reports have been and will continue to be prepared in accord with the PHS Policy IV.B.3. All IACUC semiannual reports will include a description of the nature and extent of this Institution's adherence to the "Guide." Any departures from the "Guide" will be identified specifically and reasons for each departure will be stated. Reports will distinguish significant deficiencies from minor deficiencies. Where program or facility deficiencies are noted, the report will contain a reasonable and specific plan and schedule for correcting each deficiency. Semiannual reports of the IACUC evaluation submitted to the Institutional Official. Semiannual reports of IACUC evaluations will be maintained by this Institution and made available to OLAW upon request.

This Institution is Category Two (2) - not accredited by the Association for Assessment and Accreditation of Laboratory Animal Care, International (AAALAC). As noted above, reports of the IACUC's semiannual evaluations (program reviews and facility inspections) will be made available upon request. The report of the most recent evaluations (program review and facility inspection) is attached.

V. RECORD KEEPING REQUIREMENTS

A. This Institution will maintain records for at least three years:

1. A copy of this Assurance and any modifications thereto, as approved by PHS.
2. Minutes of IACUC meetings, including records of attendance, activities of the committee, and committee deliberations.
3. Records of applications, proposals, and proposed significant changes in the care and use of animals and whether IACUC approval was given or withheld.
4. Records of semiannual IACUC reports and recommendations (including minority

views) as forwarded to the Institutional Official, Tamara Young Lee,

5. Records of accrediting body determinations.

B. This Institution will maintain records that relate directly to applications, proposals, and proposed changes in ongoing activities reviewed and approved by the IACUC for the duration of the activity and for an additional three years after completion of the activity.

All records shall be accessible for inspection and copying by authorized OLAW or other PHS representatives at reasonable times and in a reasonable manner.

VI. REPORTING REQUIREMENTS

A. This Institution's reporting period is January 1-December 31. The IACUC, through the Institutional Official, will submit an annual report to OLAW on January 31 of each year. The report will include:

1. Any change in the status of the Institution (e.g., if the Institution becomes accredited by AAALAC or AAALAC accreditation is revoked), any change in the description of the Institution's program for animal care and use as described in this Assurance, or any changes in IACUC membership. If there are no changes to report, this Institution will provide OLAW with written notification stating that there are no changes.
2. Notification of the dates that the IACUC conducted its semiannual evaluations of the Institution's program and facilities (including satellite facilities) and submitted the evaluations to the Institutional Official, Tamara Young Lee.
3. Any minority views filed by members of the IACUC.

B. The IACUC, through the Institutional Official, will promptly provide the OLAW with a full explanation of the circumstances and actions taken with respect to:

1. Any serious or continuing noncompliance with the PHS Policy.
2. Any serious deviations from the provisions of the "Guide".
3. Any suspension of an activity by the IACUC.

VII. INSTITUTIONAL ENDORSEMENT AND PHS APPROVAL

A. Authorized Institutional Official

Name: Tamara Young Lee

Title: Director, Office of Research and Sponsored Programs

Name of Institution: Alabama State University

Address: (street, city, state, country, postal code)

915 South Jackson

Council Hall, Room 301

Montgomery AL 36106

Phone: (b) (6)

Fax: NA

E-mail: tylee@alasu.edu

Acting officially in an authorized capacity on behalf of this Institution and with an understanding of the Institution's responsibilities under this Assurance, I assure the humane care and use of animals as specified above.

Signature (b) (6)

1/25/2017

B. PHS Approving Official (to be completed by OLAW)

Doreen H. Bartlett-Senior Assurance Officer
Division of Assurances-Office of Laboratory Animal Welfare
National Institutes of Health
bartletd@mail.nih.gov
Phone: 301-402-4325
Fax: 301-451-5672

Signature (b) (6)

Date: 1/26/17

Assurance Number: D16-00038

Effective Date: 1/26/17 | Expiration Date: 12/31/20

VIII. MEMBERSHIP OF THE IACUC

Date: 10/3/2016	
Name of Institution: Alabama State University	
Assurance Number: A3069-01	
IACUC Chairpersons	
Name* : Dr. Douglas Strout (Chair)	
Title* : Professor of Chemistry	Degree/Credentials* : PhD
Alabama State University Department of Physical Sciences, College of Science, Mathematics, and Technology 915 South Jackson (Hatch Hall) Montgomery AL 36106	
E-mail* : dstROUT@alasu.edu	
Phone* (b) (6)	Fax* :

(b) (6)

IACUC Roster			
Name of Member/ Code**	Degree/ Credentials	Position Title ***	PHS Policy Membership Requirements****
Edward Willis	DVM	Veterinarian	Attending Veterinarian
Cynthia Handy		Director, ASPIRE Program	Non-scientist
(b) (6)			Scientist + Vice Chair
			Nonaffiliated
			Veterinarian
			Scientist
			Scientist
Douglas Strout	PhD	Professor	Scientist + Chair

IX. OTHER KEY CONTACTS (OPTIONAL)

If there are other individuals within the Institution who may be contacted regarding this Assurance, please provide information below.

Contact #1	
Name: Tamara Young Lee	
Title: Director, Office of Research and Sponsored Programs	
Phone: (b) (6)	E-mail: tylee@alasu.edu
Contact #2	
Name: Drs. Douglas Strout or (b) (6)	
Title: Chair, IACUC	
Phone: (b) (6)	E-mail: dstrout@alasu.edu ; (b) (6)

X. FACILITY AND SPECIES INVENTORY

Date: 10/3/2016			
Name of Institution: Alabama State University			
Assurance Number: A3069-01			
Laboratory, Unit, or Building*	Gross Square Feet [<i>include service areas</i>]	Species Housed [<i>use common names, e.g., mouse, rat, rhesus, baboon, zebrafish, African clawed frog</i>]	Approximate Average Daily Inventory
(b) (4)	~1616.5	mice	~15-30

*Institutions may identify animal areas (buildings/rooms) by a number or symbol in this submission to OLAW. However, the name and location must be provided to OLAW upon request.

**SEMIANNUAL EVALUATION OF ALABAMA STATE UNIVERSITY'S
ANIMAL FACILITIES AND PROGRAMS BY THE
INSTITUTIONAL ANIMAL CARE AND USE COMMITTEE**

April 14, 2016

The Institutional Animal Care and Use Committee (IACUC) met in the Life Science Building on April 17, 2014. The following is a description of the committee's evaluation and recommendations:

I. Basis of Evaluation

The IACUC used the Guide for the Care and Use of Laboratory Animals (Guide) as a basis for the evaluating the institution's programs and facilities for activities involving animals.

II. Institution's Adherence to and the Departures from the Guide.

The committee recommended that Alabama State University adhere fully to the Guide.

III. Deficiencies

The committee did not find any major or minor deficiency in Alabama State University's animal programs and facilities.

IV. Specific Plan and Schedule for Correcting Deficiencies

No deficiencies found by committee

V. Overall Evaluation and Recommendation

The IACUC found that the animal programs and facilities of Alabama State University are in full compliance with PHS policies as set forth in the Guide.

Submitted by
Institutional Animal Care and Use Committee

(b) (6)



Dr. Douglas Strout, Chair

(b) (6)

